



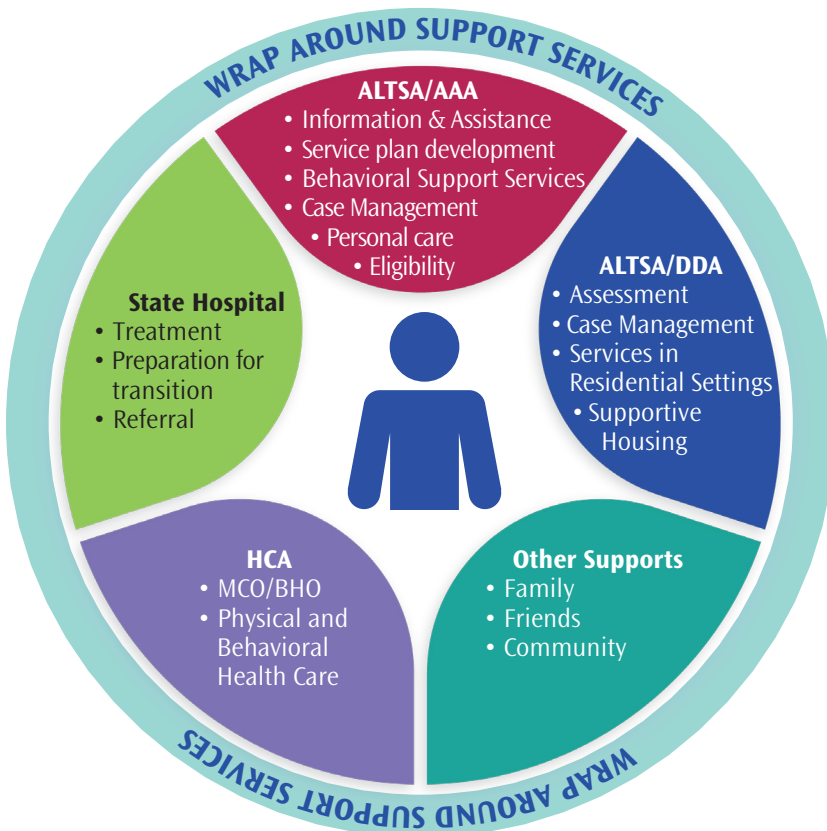
Department of Social and Health Services Enhanced Service Facilities (ESF)

Ready to transition to a safe and supportive home.

When a state hospital identifies that an individual is ready to transition and may have an unmet need for assistance with personal care services, the hospital makes a referral to the Department of Social and Health Services, Aging and Long-Term Support Administration (AL TSA). The referral triggers AL TSA to conduct a two-part process that assesses the individual's functional and financial eligibility for Medicaid-funded long-term services and supports (LTSS).

If an individual is eligible, AL TSA works with the individual and their support system, with the state hospital and with the appropriate Behavioral Health Organization (BHO)/Managed Care Organization (MCO) to develop a plan of care that supports the individual to move to a community setting.

Individuals are provided with a client-centered continuum of care.



What is an ESF?

- Small, community-based residential setting for up to 16 individuals who need support or services on a regular basis.
- Residents receive support from caring professionals and trained caregivers, but do not need the level of care provided at an institutional setting or mental health treatment facility.
- Providers are obligated to meet the health and safety needs of the individuals in their care.

What types of services are provided?

Services are provided to individuals during and after their transition to and ESF.

Services are focused on:

- Addressing LTSS
- Reducing impacts of behaviors that effect the ability of the individual to remain in the community
- Health and safety issues
- Supporting the provider to successfully serve the individual in the community setting so that reentry back to the state hospital is minimized.

A Place to Call Home

Barriers to siting ESFs has caused a process that used to take months to implement and now is taking years. Leaving people in the hospital or discharged without supports.



ESFs are a critical component of our continuum of care as they serve individuals who may not have another option based on their behavioral needs.



Barriers to siting Enhanced Services Facilities has impacted the lives of approximately 100 individuals who could transition home in this biennium.



It also comes at an additional cost to the state and it takes up unnecessary space in the hospitals.



Jerry's Success Story.

Jerry began painting when he was only 15 years old. After he was diagnosed with schizophrenia as an adult, he spent years in and out of mental health facilities.

He moved to Unified Residential Enhanced Service Facility in February 2018 and had the opportunity to rekindle his love for art.

Jerry independently rides the bus twice weekly to a studio space the facility rents for him and spends numerous hours creating masterpieces using his favorite mediums, including oil, acrylic and spray paints.

Jerry enjoys sharing his work with the community and has hosted public art shows at the local library and his studio. He finds joy in giving his artwork away and hopes others are inspired by his pieces.

When it comes to his generosity, he lives by a simple motto:

“The more you give, the more you get.”